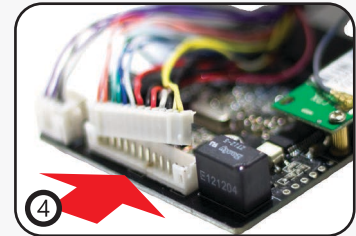
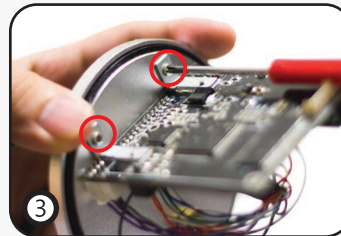
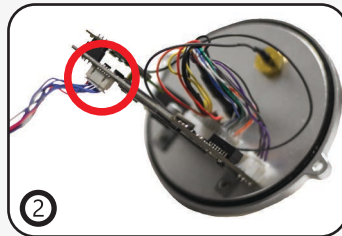




Content of delivery: 1x Heating Element IN-2908, 1x Quick Installation Guide

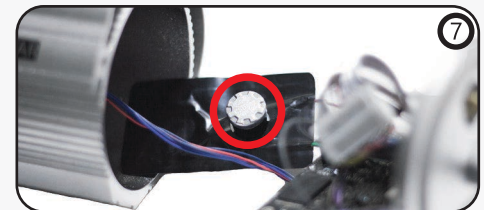
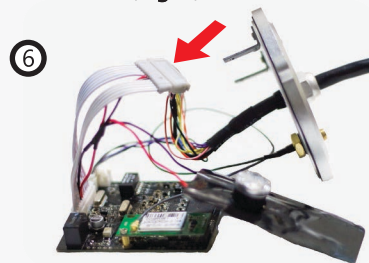
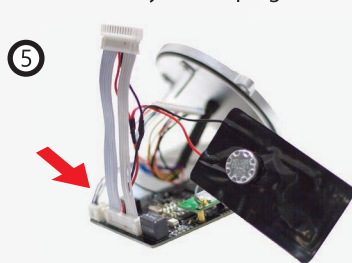
INSTAR Deutschland GmbH hereby ensures that you will not lose your warranty by installing this additional heater.

ATTENTION: Any damages caused by the user by faulty installation are excluded of the warranty.



Move the top cover a little by gently pulling it to the direction of the lens. Use an Allen Key to remove the 2 screws in the back plate of the camera (**Fig. 1**). Carefully pull the back plate and the mainboard from the camera body and unplug the board from the sensor unit (**Fig. 2**).

Loosen the 2 screws which holds the mainboard to get easier access to the connector (**Fig. 3**). Now you should be able to unplug the **13-pin** power cable connector from the mainboard (**Fig. 4**).



Now plug the heater element to the now vacant connector on the mainboard (**Fig. 5**). Then connect the other end of the cable from the heating element with the **13-pin** power supply (**Fig. 6**). Please make sure that all plugs are properly connected. To reassemble the camera you will need to reattach the mainboard to the back cover (**Fig. 3**) and reconnect the mainboard with the sensor unit. (**Fig. 2**).

Place the back plate back onto the housing and ensure that the **O-Ring**, which seals the camera and protects it from water is still in place. The thermostat (silver unit, **Fig. 7**) has to point away from the mainboard! Fasten the back plate using the 2 screws from **Fig. 1** and slide the top cover back to its original position (**Fig. 1**).